

# K31-LP ASSEMBLY INSTRUCTIONS

Figure 1

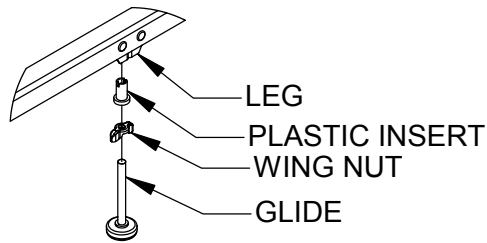


Figure 2

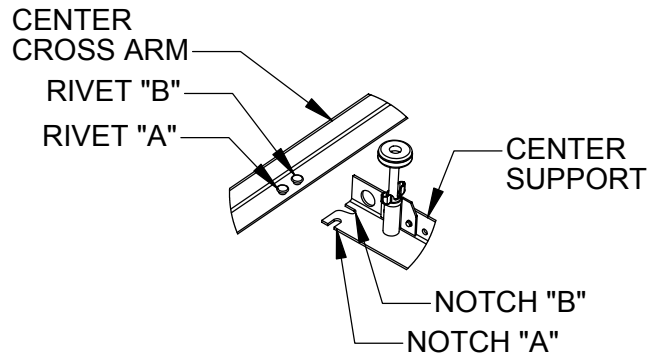


Figure 3

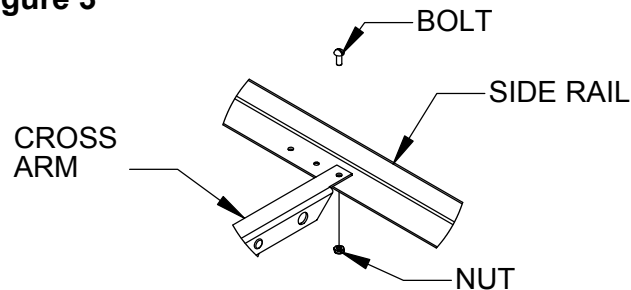


Figure 4

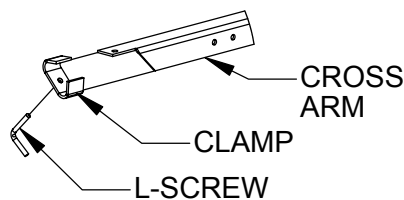
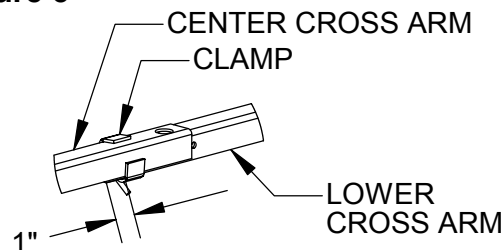
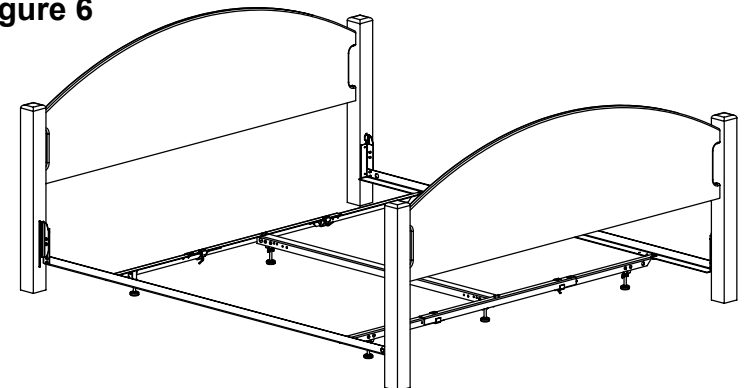


Figure 5



- Step 1:** Tap PLASTIC INSERTS into LEGS. With flat surface up, screw WING NUTS onto GLIDES. Thread GLIDES into PLASTIC INSERTS. See Figure 1.
- Step 2:** Turn CENTER SUPPORT over with legs facing up. Attach CENTER CROSS ARM by inserting RIVET "A" into NOTCH "A" then pivot so that RIVET "B" locks into NOTCH "B" as shown in Figure 2. Repeat with both CENTER CROSS ARMS. Place assembled CENTER SUPPORT in the middle of the bed.
- Step 3:** Position CROSS ARMS so that they will nest underneath the CENTER CROSS ARM and attach CROSS ARMS to SIDE RAILS with NUTS and BOLTS as shown in Figure 3.
- Step 4:** Loosely attach L-SCREWS to CLAMPS and slide CLAMPS onto CROSS ARMS as shown in Figure 4.
- Step 5:** Place CENTER CROSS ARM over CROSS ARM and slide CLAMPS onto overlapped cross arms. Position each CLAMP one inch from the edge of the lower CROSS ARM as shown in Figure 5.
- Step 6:** Adjust glides so that they touch the floor. Tighten wing nuts against plastic inserts. **Note: There must be at least one inch of the glide stem in the plastic insert.**
- Step 7:** Make sure CENTER SUPPORT is centered between SIDE RAILS. Assembled product should resemble product shown in Figure 6. Tighten all nuts, bolts, and L-screws.

Figure 6



*Leggett & Platt*  
INCORPORATED

DATE  
5-06-04

DWG. NO. **99300449**

DO NOT SCALE DRAWING SHEET 1 OF 1